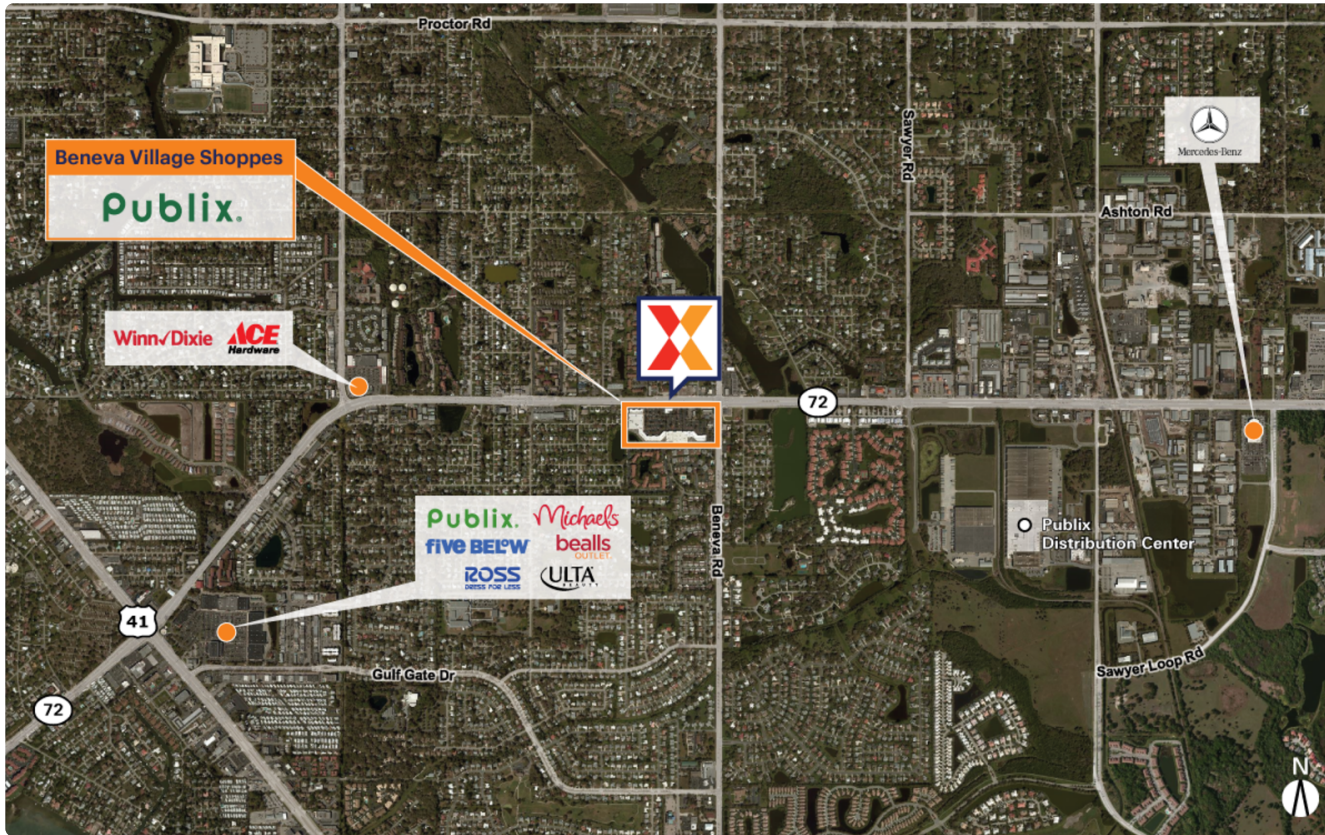


Beneva Village Shoppes

3428 Clark Road | Sarasota, FL 34231

27.2684, -82.4996

Sarasota County North Port-Bradenton-Sarasota, FL 144,078 Sq Ft



Demographics	1 Mile	3 Miles	5 Miles
Population	10,680	73,587	145,485
Daytime Pop.	9,137	79,895	157,767
Households	5,022	34,944	67,058
Income	\$116,120	\$133,676	\$144,355

Source: Synergos Technologies, Inc. 2024

Publix-anchored shopping center with national brands including Harbor Freight Tools and Phenix Salon Suites

Strong daytime population of nearly 80K within a 3-mile radius, with a Publix distribution warehouse located less than one mile away

High visibility from 22K+ vehicles daily on Beneva Rd and 36K+ on Clark Rd; just 2.5 miles west of I-75 (Kalibrate 2022)



Beneva Village Shoppes

3428 Clark Road | Sarasota, FL 34231

Sarasota County North Port-Bradenton-Sarasota, FL 144,078 Sq Ft

27.2684, -82.4996



Available Spaces

0011 6,228 Sq Ft **360°** OPO 1 0 Sq Ft

Current Tenants Space size listed in square feet

0001	Phenix Salon Suites	7,170
0002A	Gulf Coast Physical Therapy	2,811
0003A	Great Clips	1,420
003B	Publix Employees Federal Credit Union	1,401
0004	Cacio Italian Bistro	1,559
0005	H&R Block	1,478
0006	Spice Indian Cuisine	2,796
0007	Revitalize Chiropractic	1,963
0008	Audibel Hearing	836
0009	Harbor Freight Tools	15,258
0009B	Fitness Premier	12,900
0010	ArchWell Health	13,500
0015	Coast Dental	1,733
0016	Pedego Sarasota	1,200
0017	Keke's Breakfast Cafe	4,800
0018	Clothes Mentor	4,133
0020	Viva la Vida	2,251
0025	Publix	46,714
25B	Yokoso Ramen	1,516
0026	Papa John's	1,000
0027	Jersey Mike's	1,000
0028	Hair Cuttery	1,000
0029	Nails	1,000
0030	Metro by T-Mobile	1,000
0031	Tropical Smoothie Cafe	1,900
0032	Tijuana Flats	1,800
OP-1	TD Bank	3,711
NAP01	Taco Bell	0
NAP02	Mobil	0
NAP03	NAP	0

This site plan is for illustrative and information purposes only, showing the general layout of the shopping center; and is not a legal survey. Brixmor makes no representation or warranty that the shopping center is exactly as depicted as site conditions and tenant mix are subject to change over time. 1838

